

16 Stitches' Style Guide

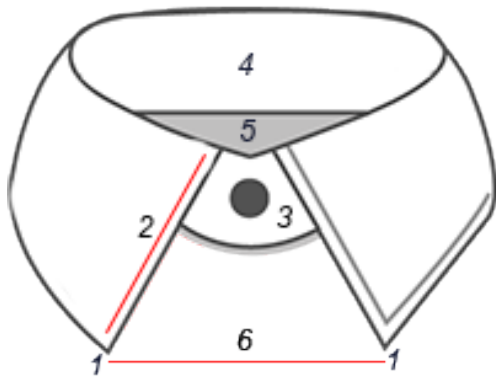
A lot of detailing goes into the making of a good dress shirt, right from the collar to the cuffs, to the cut of the torso. This style guide has been put together to help you know about the different types of styling options available at 16 Stitches and design the perfect shirt for yourself.

Note: The choice of style is a matter of personal preference. These guidelines are not rigid rules; its best to experiment with the various styles available and see what best suits your personal style.

1. Collars:

The collar is what frames your face and thus, plays a vital role in accentuating your facial features. With the wide array of collar styles available, it is best to know the collars well in order to design a good dress shirt.

Before you read about the various types of collar, below listed are the various terms used to define the collar:



1. **Collar Points** - The tips of the collar.
2. **Collar Point Length** – The distance from the Collar Points to where they meet the Collar Band.
3. **Collar Band**- the piece of fabric that wraps around the neck.
4. **Collar Height**- The height of a folded collar as it fits on the neck.
5. **Tie Space** – The distance between the top of the folded collar parts when the shirt is buttoned.
6. **Spread** – The distance between Collar Points.

These are the key terms used to understand the collar styles.

The different types of collars available at 16 Stitches are listed below:

1.1 Classic Collar



Commonly known as the Straight collar, this type of collar is an incredibly universal and versatile collar style. It works great professionally or casually and goes well with a variety of tie knots and sizes. It is distinguishable by the small spread between the collar points of approximately 8 cm. This type of collar is excellent for men with fuller and round shaped face as it works to elongate the face.

Cuff: Double Button Round

Pocket: No Pocket

Front: Standard Placket

Back: Box Pleats

1.2 Button Down Collar



This dapper shirt collar is similar to the Classic collar but has small buttons on both points, which are used to secure the collar to the shirt firmly. This collar is usually worn casually or with a tie for a dressy look, however it is the least formal of all collar choices.

Cuff: Single Button Round

Pocket: Curved Cut

Front: Standard Placket

Back: Box Pleats

1.3 Spread Collar



The Spread collar is a to-go collar style appropriate for any occasion. We love it because it looks good with any pattern, color and fabric, casually or dressed. The collar's points are spread out approx. 10 cm apart, revealing more of the upper shirt area. These collars are excellent for men with a medium to long shaped face as it helps spread out the facial features.

Cuff: Single Button Angled

Pocket: Angled Pocket

Front: Standard Placket

Back: Side Pleats

1.4 Wide Spread Collar

Our Wide Spread collar is a bolder take on the regular spread collar. The points of the collar are pulled back to the side (14 cm apart) to allow full view of the necktie knot. This is ideal for fuller tie knots and can also be left unbuttoned for a classy look.



Cuff: Double Button Angled

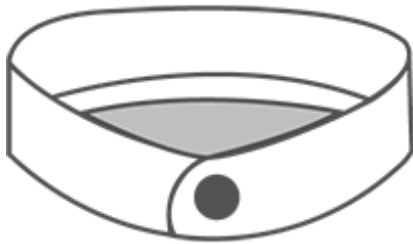
Pocket: No Pocket

Front: No Placket

Back: Side Pleats

1.5 Banded Collar

This collar consists only of the collar band, which stands straight up without the turn down collar points. At 16 Stitches, the banded collars are made to a height of 3 cm. They are never worn with a tie and go well with linens.



Cuff: Single Button Rounded

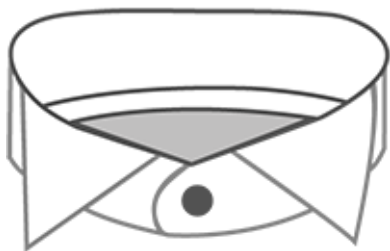
Pocket: Rounded Pocket

Front: Standard Placket

Back: No Pleats

1.6 Wing Tip Collar

Also known as the black tie collars, these are worn with the tuxedo. It has a collar band with two small "wings" at the front, which are tucked behind the bow-tie (with no turn down points).



Paired either with a bow tie or an ascot, these are the most formal of all collar types and are preserved particularly for very formal occasions.

Cuff: French

Pocket: No Pocket

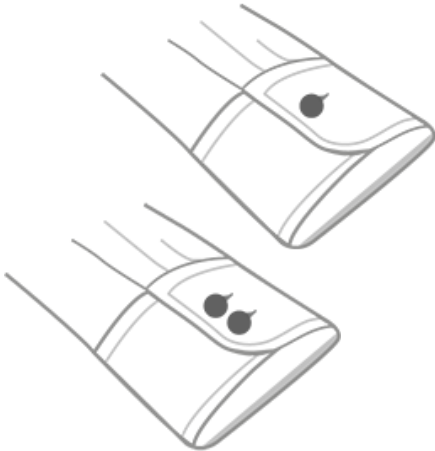
Front: Concealed

Back: Side Pleats

2. Cuffs:

It acts as another element, which adds personality to the shirt. The different cuffs available at 16 Stitches are as follows:

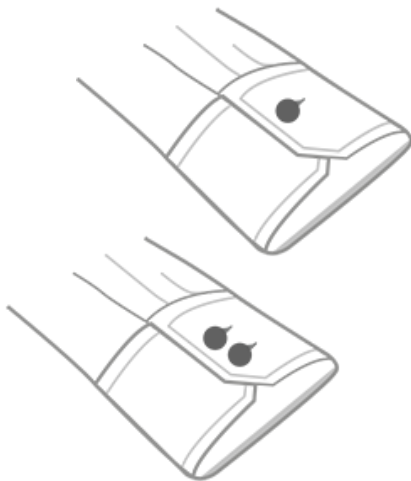
2.1 Single Button Rounded / Double Button Rounded Cuffs



The rounded cuff is simply a barrel cuff with curved corners. This gives off a slightly more casual and relaxed feel; thus, generally paired with the button-down collar.

In general, double buttons are recommended for taller men, where as single button for short men to give an impression of long arms. The Double button cuff also has a larger barrel length which gives a nice snug fit around the wrist.

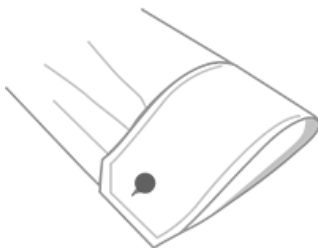
2.2 Single Button Angled / Double Button Angled Cuffs



The Angled cuff is a barrel cuff where in its corners cut at an angle. It's an interesting detail that creates a sharp look fitting for more professional or formal occasions.

In general, double buttons are recommended for taller men, where as single button for short men to give an impression of long arms. The Double button cuff also has a larger barrel length which gives a nice snug fit around the wrist.

2.5 French Cuffs



The French cuff is our most formal cuff. French cuffs are twice as long as regular cuffs and then folded back on themselves and closed with cuff links. They have a very distinct look and are usually paired with the wing type collar style or formal shirts.

3. Placket:

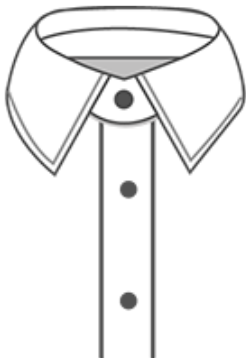
The front style is determined by your choice of placket. Besides pure aesthetics, a shirt placket helps to reinforce and retain the shape of the front of your shirt.

3.1 No Placket



In this placket, the edge of the shirt's front is folded over to create a creased edge and held together by the buttonholes. This cleaner, plain front gives the shirt a simple look. As that simplicity tends towards formality, this front style is considered dressier than the standard placket.

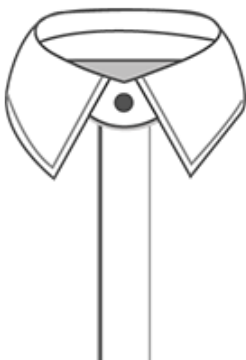
3.2 Standard Placket Front



This is the most common style of placket in dress shirts. An inch or two of the fabric is either folded or attached as a separate piece with stitches showing on both sides.

It adds stability to the front of the shirt and makes the front of the shirt aesthetically symmetrical.

3.3 Concealed Placket Front



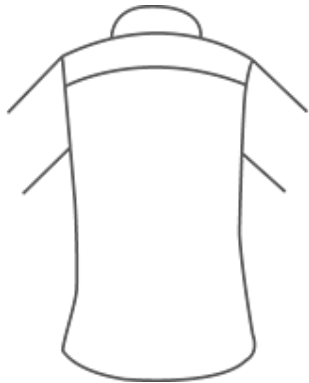
A Concealed shirt placket has a flap of material on the front to conceal the buttons underneath. It is also sometimes known as the Fly Front shirt placket. It can be worn to formal events that require a tuxedo, as a fly front tends to draw attention away from the shirt to the bow tie.

4. Back

For most men, the main criterion, while shopping for dress shirts, is comfort. Even a snugly fit shirt should not restrict movement. The back pleats play a major role in determining the comfort of the shirt. They help to conform the shirt to a specific body type and allow for more movement around the shoulders and arms.

The different types of pleats options available at 16 Stitches are as follows:

4.1 No Pleat



This is the cleanest style that is the most formal of the three. If the dress shirt has no pleats, it means it has to be tailored to fit the person wearing it.

4.2 Box Pleat



Box pleat is the most common style of pleats found in dress shirts. It is a rectangular fold of fabric that runs along the middle of the back, which allows for at least 1 - 1.5 inches of extra fabric. It is advisable for men who have shoulders that slope. However, it is the least formal and can add fullness to the waist, at the back.

4.3 Side Pleat



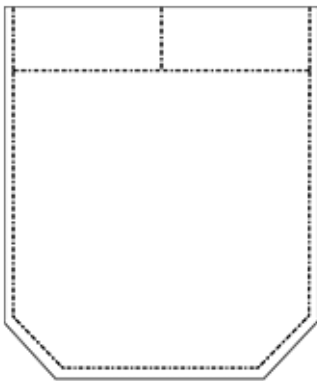
This style looks cleaner, with the side pleats placed near the shoulder blades. They are considered more stylish and subtle than their box counterpart and tend to fit men more comfortably because they align better with the shape of the wearer's back.

5. Pocket

Most shirts have a single pocket on the left breast, which is believed to add depth to the dress shirt. However, pockets tend to decrease the formality of the dress shirt. Generally, pockets are meant to be purposeful, but in essence, its mere objective is to add style. A shirt with no pocket gives a simple clean look, which sets it apart from the crowd in any formal occasion.

The shape of the pocket can be rounded or angled, angled giving more depth to the shirt.

(Angled)



(Rounded)

